

D1 Darwin Data Centre

Technical Specifications



N E X T D C
where the cloud lives™



The innovation epicentre for cloud and digital transformation

NEXTDC's Darwin data centre is centrally located and seamlessly interconnected to Australia's largest community of cloud platforms, digital services providers and enterprises.

Connect to the critical communities that underpin the acceleration of your digital transformation objectives, and amplify business value, including content and digital media providers, global networks and cloud services.

Housing the largest network of cloud onramps, connect directly and securely to the nation's major cloud access points to Microsoft Azure, Amazon Web Services (AWS), Google Cloud, IBM Cloud, Oracle Cloud and OVHcloud so you optimise speed to value for your cloud and transformation objectives.



A1 Adelaide
125 Frome Street, Adelaide SA 5000



B1 Brisbane
20 Wharf Street, Brisbane City QLD 4000



B2 Brisbane
454 St Pauls Terrace, Fortitude Valley QLD 4006



C1 Canberra
19 Batty Street, Bruce ACT 2617



D1 Darwin
2 Harvey Street, Darwin NT 0800



M1 Melbourne
826 Lorimer Street, Port Melbourne VIC 3207



M2 Melbourne
75 Sharps Road, Tullamarine VIC 3043



M3 Melbourne
25 Indwe Street, West Footscray VIC 3012



NE1 Newman
96 Woodstock Street, Newman WA 6753



P1 Perth
4 Millrose Drive, Malaga WA 6090



P2 Perth
11 Newcastle Street, Perth WA 6000



PH1 Port Hedland
17 Loreto Circuit, Port Hedland WA 6721



S1 Sydney
4 Eden Park Drive, Macquarie Park NSW 2113



S2 Sydney
6-8 Giffnock Avenue, Macquarie Park NSW 2113



S3 Sydney
2 Broadcast Way, Artamon NSW 2064



S6 Sydney
3 Broadcast Way, Artamon NSW 2064



SC1 Sunshine Coast
44 Maud Street, Maroochydore QLD 4558

Scale your IT securely, with speed and precision at Darwin's premier technology hub

NEXTDC's digital infrastructure platform enables secure, seamless and frictionless access to the cloud platforms, carriers and digital services providers that your business needs to succeed.

There is nothing more critical than your brand, reputation, and your ability to faultlessly serve your customers. We understand the always-on nature of your businesses, and the critical need for immediacy 100% of the time. As the Northern Territory's premier data centre provider, we're the best in the business when it comes to protecting yours.

Confidently managing risk and improving the resilience of your business is critical to compete and thrive in the digital era. Supporting the dynamic and rapidly evolving requirements of digital businesses requires the backing of completely fault tolerant digital infrastructure. Our Darwin data centre sets the benchmark for premium colocation facilities in the state. As the only fault tolerant digital infrastructure platform in the Northern Territory, your business benefits from the highest levels of resilience, reliability and performance, all backed by NEXTDC's industry leading 100% uptime guarantee.



Proximity and performance

NEXTDC's Darwin data centre offers superior interconnectivity capability, enabling you to bridge the distance and latency between your hybrid IT environment to your cloud platforms, locations and digital services partners.



Geo-redundancy









Enables you to run active sites across our national footprint. Should disaster strike, simply failover to your specified location via secure, high-performance dynamic connections.










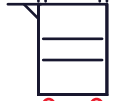
Availability

NEXTDC delivers the highest levels of availability and reliability of the critical infrastructure your business needs to succeed. Our national digital infrastructure footprint is backed by an industry leading service level guarantee of 100% uptime.

Data centre specifications

| | |
|--|------------------------------|
|  Location | 2 Harvey Street, Darwin 0800 |
|  Target IT capacity | 1MW |
|  Technical space | 3,000m ² |
|  Target PUE | 1.5 |
|  Data halls | 15 |
|  Rack capacity | 1,500 |
|  Diverse IR spaces | 2 |
|  Mission critical operations space | 2,000m ² |

Facility features

| | | | |
|---|---|---|---|
|  |  |  |  |
| On-site parking | Undercover loading dock | Wifi | Customer breakout area |
|  |  |  |  |
| Office space | Collaboration, R&D and incubation spaces | Spare parts | Crash carts |

Globally recognised and certified data centres

In order for organisations to run a business that is 'Always On' and available to service consumer demand, ensuring you have the most reliable infrastructure supporting your business is critical to ensuring future growth and continued expansion.

NEXTDC's focus and continued investment into building the most reliable infrastructure platform in the country is demonstrated in our Uptime Institute certifications for operational sustainability (Gold Operations) and completely fault tolerant data centre design and construction (Tier IV).

A globally recognised endorsement of our facilities' ability to withstand individual equipment failures or distribution path interruptions and maintain IT operations 24/7.

Tier IV Completely fault tolerant data centre infrastructure

Uptime Tier IV for constructed facility is the pinnacle of data centre certifications worldwide. Tier IV infrastructure is a building block on top of the requirements for Tier III, adding in complete fault tolerance to the infrastructure deployed onsite. Completely fault tolerant infrastructure means that any individual equipment failures or distribution path interruptions that occur, will have no impact to the overall operations of the facility.




ISO 27001:2013
Information Security Management System (ISMS) certification.



ISO 14001:2015
Environmental Management System certification.



ISO 9001:2015
Quality Management System certification.



ISO 45001:2018
Occupational health and safety management systems.



SOC 1/SOC 2

SOC is a suite of reports from the AICPA that CPA firms can issue in connection with system-level controls at a service organisation.



PCI-DSS

The Payment Card Industry Data Security Standard is an information security standard for organisations that handle branded credit cards from the major card schemes.



FTSE4Good

FTSE4Good

Certified ethical company.



Australian Government Digital Transformation Agency

Digital Transformation Agency (DTA)

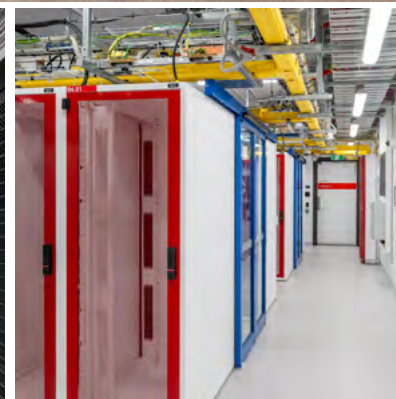
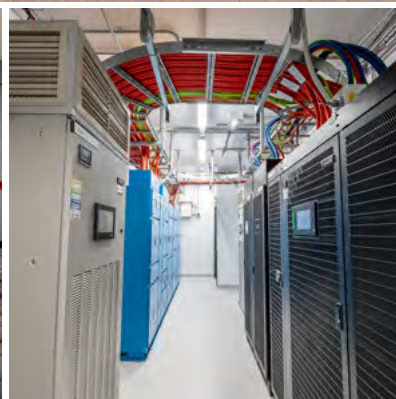
Commonwealth Government's Hosting Certification Framework.

D1 Darwin

NEXTDC's D1 Darwin data centre will bring world-class digital infrastructure to the heart of the Northern Territory, forming a key enabler of the regions Digital Territory strategy.

D1 is NEXTDC's flagship hyperscale data centre in the Northern Territory, and the first of its kind for Darwin. In partnership, NEXTDC and the Northern Territory Government are committed to driving the economic development for technology capabilities in the region.

Located at 2 Harvey Street, D1 is within walking distance of the Darwin CBD and Charles Darwin University CBD Campus. With a university campus at its core, with D1 underpinning the region's digital needs, the Darwin CBD will inspire curiosity and fresh thinking for our new generations.





Why choose NEXTDC



Flexible infrastructure

With 3,000m² of technical and operational space, NEXTDC's Darwin data centre provides the capability needed to support high-density hybrid IT environments. Our digital infrastructure platform supports the long-term requirements of organisations, delivering solutions that meet your needs now, with the ability to scale easily to support your future needs.



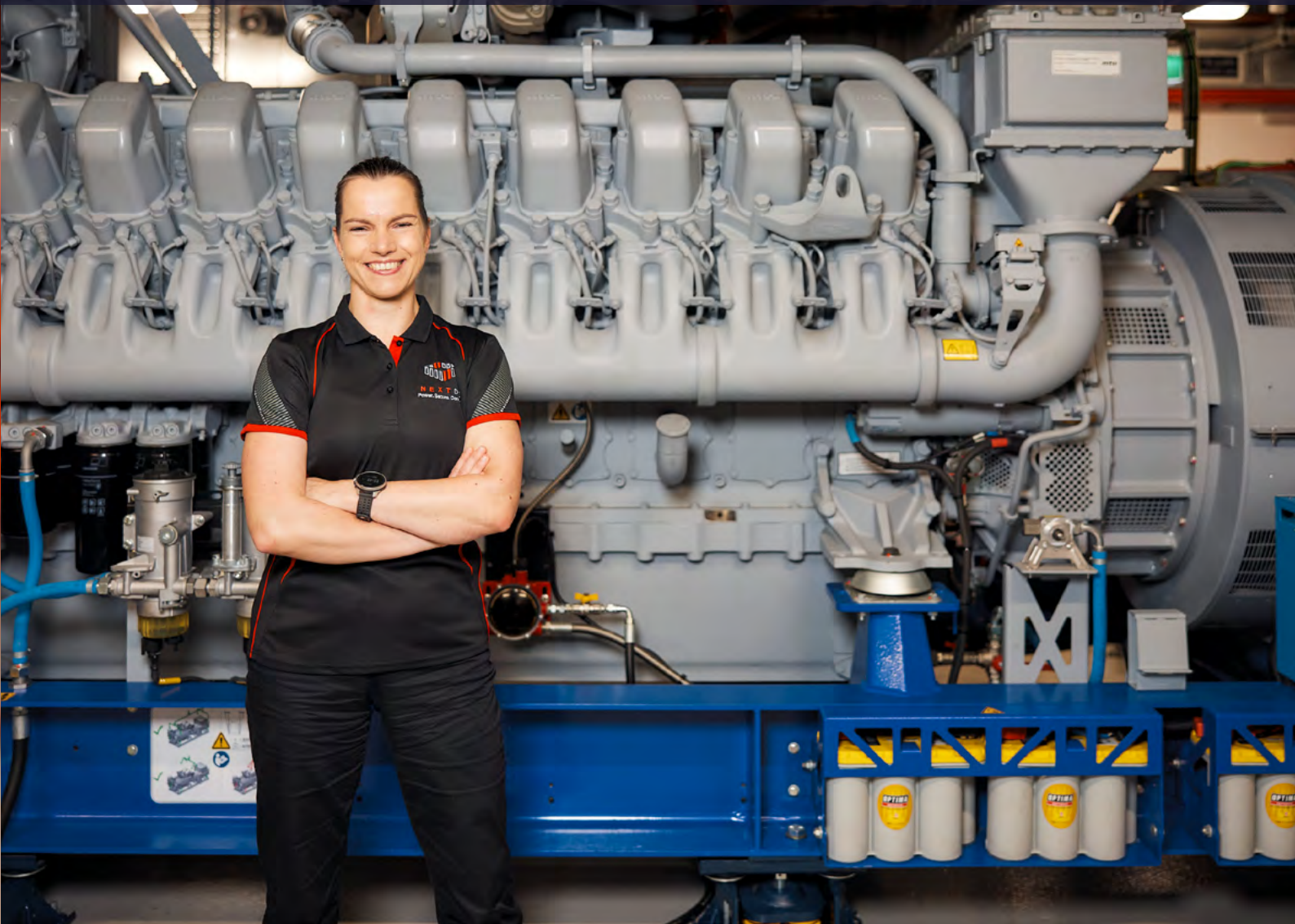
Interconnected advantage

Select from flexible connectivity services ranging from Structured Cabling and Cross Connects to cloud connections, we will help build a solution that best suits your business or project requirements.



Cloud enabled

When you house your IT infrastructure in NEXTDC's data centres, your critical IT assets are interconnected directly, and natively to AWS, Microsoft, Google, Oracle, IBM and AUCloud.



Operational excellence

Our team of highly specialised operations experts are the leaders in the Australian industry. As a customer-first organisation, we pride ourselves on ensuring we deliver the highest levels of customer service and support in the country. Our expertise and passionate team are the reason we are recognised as the leading data centre services provider in the country.



Scalable networks

Establish low-latency network connections with access over 70 global carriers, networks of your choice, including global carriers, subsea cables, metro networks, SDNs and more.



Elite security

Every NEXTDC facility is monitored and secured via our elite security operations centres 24/7/365. Governed by the highest security standards globally, our facilities are purpose built to ensure a frictionless experience, governed by a comprehensive framework comprising five layers of security.

Interconnect to the digital platforms and services that fuel your growth

With over 750 cloud, network and IT service providers available within our data centres and continued facility expansions, our customers' growth and technology needs are supported now and into the future. NEX TDC offers organisations greater choice and guaranteed reliability when interconnecting their business to the clouds, networks and platforms that drive their business, and quality assurance when it comes to building high-performance, highly reliable and scalable Hybrid IT architectures.

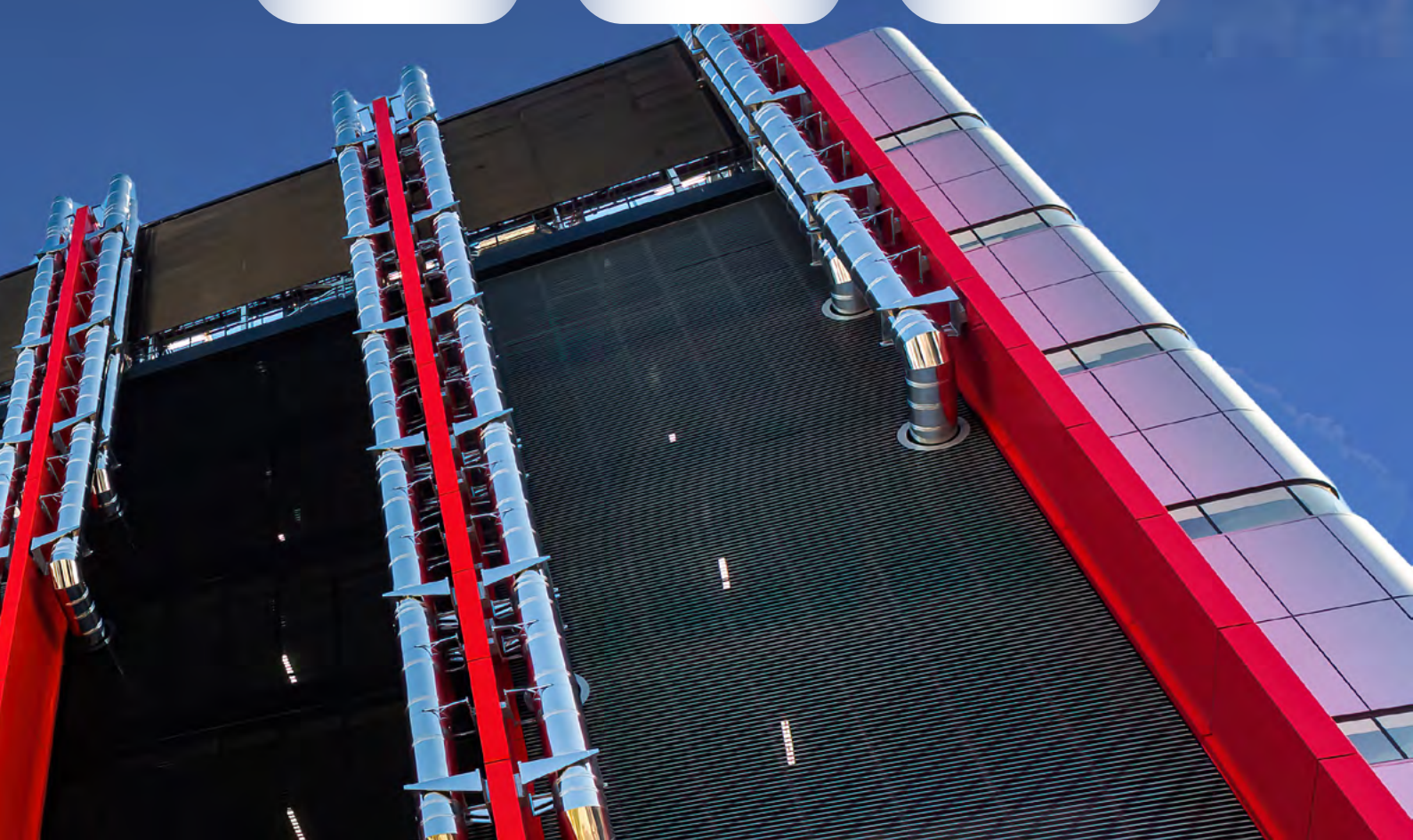


The fastest most direct access to your public cloud on-ramp

Partnering with NEXTDC means positioning your critical infrastructure in the epicentre of your digital services supply chain. Our digital infrastructure platform enables direct, secure and native access to your clouds, with the advantage of proximity. The power of proximity and speed delivers you the agility, performance, and customer experience advantages needed to increase your competitive edge.



Locally available hosted cloud access points



Technical specifications

D1 Darwin

| | |
|---|---|
|  Cooling | <ul style="list-style-type: none"> Hot aisle containment, ceiling plenum hot return space. Vertiv in-direct, free cooling CRAC paired with modular cooling tower infrastructure for continued growth. N+1 independent cooling systems, providing high levels of reliability and industry leading PUE of 1.2 (yearly average target) or 1.15 (yearly lowest). 24 hours of water stored on-site (minimum). |
|  Electrical | <ul style="list-style-type: none"> 2.7MW Piller rotary UPS supported by MTU (Rolls Royce) engines, supporting the entire site load. 24 hours of fuel stored on-site (minimum). 100% UPS backup of entire site including mechanical for continuous cooling. Isolated Parallel Bus. |
|  Fire | <ul style="list-style-type: none"> Wagner aspirating smoke detection. Inert gas fire suppression with low pressure release, onsite supply primary and reserve. |
|  Security | <ul style="list-style-type: none"> ASIO Physical security ZONE 3 compliant. Designed and built to meet minimum requirements for a Protective Security Policy Framework (PSPF). Physical security concept provides the necessary measures to DETER-DETECT-DELAY-RESPOND to any security event at any of the zones. Ballistic rated Security Office. 24/7 onsite elite security operations. Extensive coverage by motion sensitive, high definition CCTV cameras. Two factor Biometric fingerprint security for data centre access. Individual credential checks prior to authorisation. Anti-cloning access card encryption. Intruder-resistant glass, steel mesh and solid concrete walls. Secure, undercover loading dock for deliveries. Remote monitoring and rack access control via ONEDC®. Monitoring of news and weather for external security risks. |
|  Loading dock | <ul style="list-style-type: none"> Secure, undercover loading dock facilities. Supporting large scale delivery of IT equipment. Unpacking space, with trash removal. Staging rooms, pre-test before move to data hall. Customer storage facilities available purpose-built paths from delivery to data hall for rapid install and activation. |
|  Front of house | <ul style="list-style-type: none"> Support for escorted access and tours. Assistance with car parking and meeting rooms. Small package receipt and dispatch. 24/7 365 support on-site (if required). |
|  Customer services | <ul style="list-style-type: none"> Bookable meeting rooms and AV equipment. Dedicated office space for long-term private use (mission critical office space). Chill-out and break-out suite equipped with kitchen facilities, coffee and refreshments, TV and lounge. 1 x 15 tonne goods hoist. Customer car parking. Spare parts vending machine. Crash carts. Guest Wi-Fi. |
|  Carrier and vendor neutral | <ul style="list-style-type: none"> Multiple street fibre connection pits and dual diverse Interconnect rooms. Open access for all fibre operators, Carriers, ISPs, MSPs. |
|  Interconnectivity solutions | <ul style="list-style-type: none"> High performance, lowest latency, secure connections. Gateway to NEXTDC's entire national ecosystem of public and private cloud providers, carrier networks and MSP services. Dynamic, private, and scalable connections to Microsoft Azure, Amazon Web Services (AWS), Google Cloud, IBM Cloud, Oracle Cloud and OVHcloud. Dedicated, cost effective and low latency point-to-point Cross Connects. |



NEXTDC's infrastructure platform delivers the security, sovereignty and interconnectivity capability your businesses requires. Our premium solutions empower the underlying capability you need to grow and scale without friction or limitation and accelerate the momentum of data traction.

Find out how NEXTDC can help you enhance the reliability and efficiency of your digital infrastructure, so you stay focussed on driving growth and creating value for your customers.



N E X T D C

where the cloud lives™

136 398

sales@nextdc.com

nextdc.com