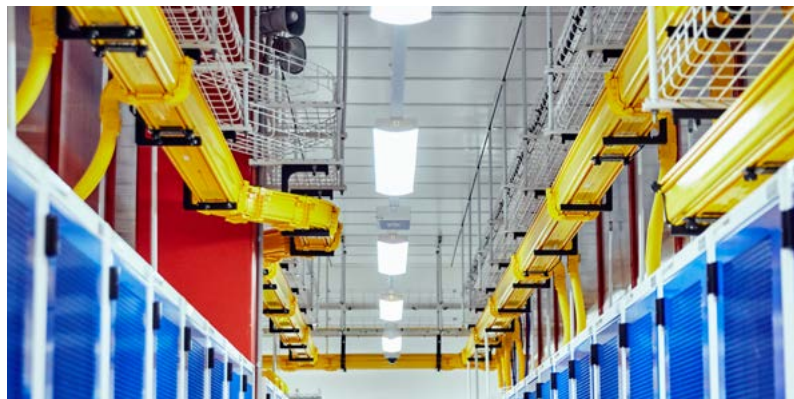


# TECHNICAL SPECIFICATIONS

# M2MELBOURNE



## M2 Melbourne

The first Victorian data centre to receive Tier IV Certification of Constructed Facility (TCCF) from Uptime Institute, the world's leading independent data centre advisory and certification organisation.

Strategically located in Tullamarine, close to major transport and telecommunications infrastructure, M2 delivers significant data centre capacity that Melbourne based organisations demand.

Acting as Melbourne's major hub for connectivity, M2 delivers access to the world's largest cloud computing platforms and enables organisations to connect on-demand to a host of cloud services such as AWS, Microsoft Azure, Google Cloud, Oracle Cloud, IBM Cloud and Alibaba Cloud through AXON.

As Melbourne's newest and most highly connected independent data centre, M2 will boast 15,000m<sup>2</sup> of high density technical space and will scale to a target capacity of 40MW at full fit-out. Surpassing all industry standards for security, performance, reliability, resiliency and energy efficiency, M2 showcases the latest innovations in data centre design, delivery the technical excellence organisations require.

## M2 at a glance

Technical space	Stage 1: 10,000sqm Stage 2: 5,000sqm
Total IT capacity	Stage 1: 25MW Stage 2: 15MW
Initial capacity	2MW
Target PUE	1.28 <sup>1</sup> / 1.10 <sup>2</sup>
Designed and constructed to	UTI Tier IV

- Value relates to total energy consumption ratio during a full calendar year, dependent on load and supports a NABERS 5 star rating.
- Value refers to best instantaneous power consumption ratio within a calendar year, dependent on load and optimal environmental conditions.



Quality  
ISO 9001



Information  
Security  
ISO 27001



**N E X T D C** where the cloud lives™

13 NEXT sales@nextdc.com [www.nextdc.com](http://www.nextdc.com)

# M2

## NEXTDC'S SECOND GENERATION DATA CENTRE

### TIER IV CERTIFICATION OF CONSTRUCTED FACILITY = FAULT TOLERANT

#### COOLING

- Hot aisle containment, no raised floor
- Vertiv evaporative free cooling units
- N+1 independent cooling systems, providing high levels of reliability and industry leading PUE of 1.28 (yearly average) or 1.10 (yearly lowest)
- 24 hours of water stored on-site (minimum)

#### ELECTRICAL

- Isolated Parallel Bus
- 1.5MW Piller rotary UPS supported by MTU (Rolls Royce) engines, supporting the entire site load
- 24 hours of fuel stored on-site (minimum), per engine
- 100% UPS backup of entire site including mechanical for continuous cooling

#### FIRE

- VESDA fire detection
- Inert gas fire suppression with low pressure release, on-site supply for two data hall-level events

#### SECURITY

- Access control and video surveillance
- Remote rack access control

#### EXPANSION

- Stage 1 provides 10,000m<sup>2</sup> of data hall space available for 25MW of client load, with Stage 2 to expand by 5,000m<sup>2</sup> and 15MW
- All critical system components built and operated in N+1 mode – 100% uptime SLA

#### LOADING DOCK SUPPORTING LARGE SCALE DELIVERY OF IT EQUIPMENT

- Unpacking space, with trash removal
- Staging Rooms, pre-test before move to Data Hall
- Purpose built paths from delivery to Data Hall for rapid install and activation

### FRONT OF HOUSE & CONCIERGE

- Support for escorted access and tours
- Assistance with car parking and meeting rooms
- Small package receipt and dispatch
- 24/7 365 support on-site if required

### CHILL OUT ROOM & MEETING FACILITIES

- Work or take a break on-site
- Client meetings, with NEXTDC support if required

## M2 – A highly interconnected, seamless extension of M1

### CARRIER AND VENDOR NEUTRAL

- Multiple street fibre connection pits and dual diverse Interconnect rooms
- Open access for all fibre operators, Carriers, ISPs, MSPs

### NEXTDC CROSS CONNECT FOR PRIVATE CONNECTIONS TO THE ENTIRE ECOSYSTEM

- Data Centre Interconnect between M2 and M1
- 1Gb and 10Gb and Fibre Pair

### NEXTDC'S ETHERNET CONNECTIVITY PLATFORM, AXON IS AVAILABLE AT M2

- Providing the full benefits of NEXTDC's private Ethernet connectivity
- Single port for multiple application
- Rapid provisioning and de-provisioning
- Carrier marketplace
- Gateway to NEXTDC's entire national ecosystem of public and private cloud, ISP and MSP providers